

School Security Infrastructure Project

Organization & Contact: Charlotte County Public Schools
Dr. Michael Desjardins
Assistant Superintendent for School Support Services

Charlotte County Public Schools
Jerry Olivo
Assistant Superintendent for District Support Services

Area: This project would encompass all Charlotte County Public Schools and ancillary facilities which span across the entire county.

Location: Project is located throughout the Charlotte County Public School District.

Category: Schools (Safety and Security).

Focus Area(s): Safety and Security/Infrastructure

Need:

The tragedy at Marjory Stoneman Douglas High School has put an unfortunate spotlight on the need to enhance school security. Charlotte County Public Schools is seeking to continue its proactive approach to student safety with the installation of a 21st century **Integrated Emergency Response System** that will allow an immediate response to an Active Shooter Incident. The reality, since the horrible tragedy at Parkland, is the realization that Active Shooter Incidents are now becoming commonplace. The ability to deter and instantly respond to such an event is of critical importance.

Purpose:

To safely protect the 17,000 students, staff, and community members on all Charlotte County Public School sites.

Objectives:

Modernizing and improving school security infrastructure to allow for a fully integrated "one-button" lockdown system. Security infrastructure enhancements include but are not limited to adding, replacing, or enhancing the following items: video surveillance equipment, wall mounted emergency buttons, active assailant strobe lights, door ajar technology, intercom systems, and cell phone amplifiers.

Project Cost Prior Funding:	\$0
Project Cost Prior from Sales Tax:	\$0
Total Project Cost:	\$0
Project Cost Required New Sales Tax:	\$5,000,000
Annual Operating Cost:	\$150,000 (school district funds)

Project to be funded by the 1% Local Option Sales Tax Extension if passed by the voters of Charlotte County

Will the project impact public health and safety? If so, how?

Yes, this project is tied to school safety and security which directly impacts public health and safety. The upgraded technology allows for an immediate response from first responders in the event of an active assailant incident.

Will the project foster economic development and create long-term jobs? If so, how?

Yes, this project is wide in scope (all Charlotte County Public Schools and ancillary facilities) and will be a multi-year endeavor. Our proactive approach that uses preventative security technologies will allow Charlotte County Public Schools to be in the forefront of safe school districts in Florida. Safe and high achieving school districts are key selling points for families looking to purchase or build homes as well as prospective businesses looking to expand and invest.

Will the project result in decreased, increased, or no operation and maintenance (O&M) costs?

Ultimately, this project will increase the operation and maintenance costs for the Charlotte County Public School District. This is an acceptable by-product of enhanced student and staff safety.

Will sales tax allow for application of grant funds from another entity?

Yes, the ability to obtain sales tax dollars for the security infrastructure enhancements will allow participation for available federal grants offered through the Office of Community Oriented Policing Services (U.S. Department of Justice).

Will the project enable furtherance of phased projects from 2014 sales tax extension?

Yes, this project builds upon the 2014 one cent sales extension which provided infrastructure funds for classroom door security function lock-sets and school front office single point entry upgrades. The funds for the upcoming 2020 sales tax extension allow for both preventive and reactive security upgrades.

Is this a joint project with another entity?

Yes, the school district has been in collaboration with local First Responders regarding the implementation of an Integrated Emergency Response System. First responders will have access

to various levels of school security technologies such as live video surveillance monitoring.

Will the project meet a community obligation to serve a special needs segment of the County's population, such as: low-income, aged, or minorities?

Yes, this project directly serves all public school students which is a population that mirrors the demographics of Charlotte County.

Is the project included in a Master Plan, Comprehensive Plan, or Capital Needs Assessment?

Yes, the project features many of the recommendations outlined in the Marjory Stoneman Douglas Public Safety Commission Report (January 2, 2019). It is important to note that this project includes Level 4 recommendations found within the report. School safety projects are included in the CCPS "Five Year District Facility Work-Plan" which is incorporated into the Capitol Improvement Element of the Charlotte County Government's Comprehensive Plan.

Will the project impact environmental quality of Charlotte County? If so, how?

Yes, this project allows for a 21st century approach to school security. The goal is to seamlessly integrate school security ensuring that schools are both safe and visually welcoming to students, parents and community members. The environmental impact on the human condition has a direct correlation to mental health and wellness. Schools that are visually appealing enhance the community for all residents. At a minimum, Charlotte County Public Schools serve 50,000 students, parents and employees on a daily basis which does not include school sponsored public events that draw thousands of additional residents.

Will the project improve quality of life in Charlotte County?

Yes, this security infrastructure project has a positive impact on the quality of life of the students, parents, and citizens of Charlotte County. A Community that prioritizes the safety, health, and the well-being of children is a direct reflection of its values and quality of life. Additionally, our public schools are used by all residents as gathering points for various activities and the security features outlined in this proposal protect all Charlotte County citizens.

Project to be funded by the 1% Local Option Sales Tax Extension if passed by the voters of Charlotte County

Is the project state or federally mandated?

School security infrastructure upgrades are state mandated recommendations by the Marjory Stoneman Commission. These "recommendations" will be submitted to the Governor, by August of 2020, and will include a prioritized list with timeframes for mandatory implementation.

Is the project dependent upon or connected with the completion of another project?

Yes, the installation of an Integrated Emergency Response System, is the next phase of the district initiative to comply with security recommendations stemming from the Marjory Stoneman Commission Report. Charlotte County Public Schools has always had a proactive approach to school security from Columbine (1999) to Sandy Hook (2012) to Parkland (2018). It is also important to note that many of these "recommendations" will likely become state mandates in the near future.

**School Safety is our
Number One
Priority**



Integrated Emergency Response System

Simple to Use

Efficient and Timely

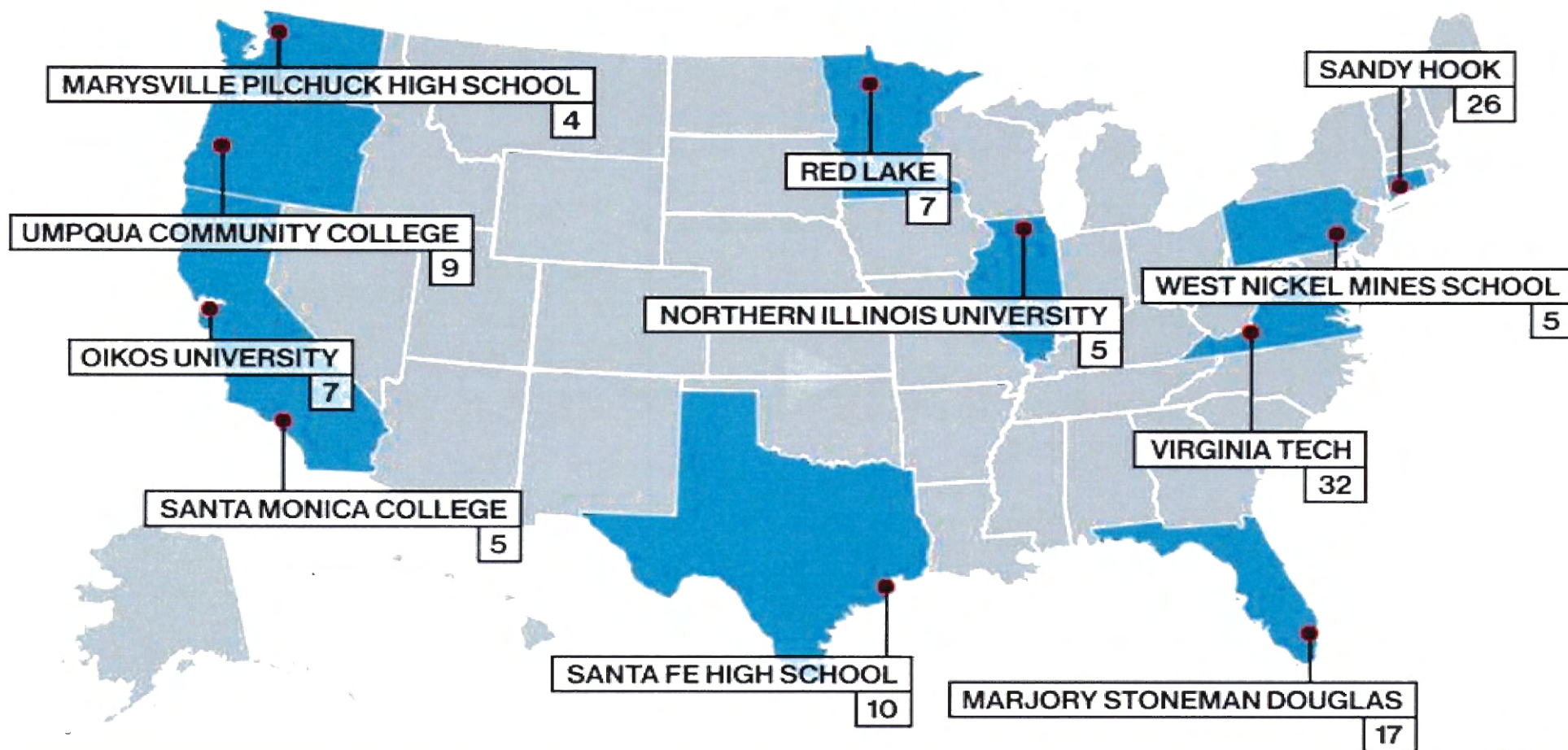
Provides an Instant Response to Active Shooter Events

Charlotte County Public Schools

- We are a school system of approximately 15,000 students and 2,000 employees
- One Pre-K Center School
- Ten Elementary Schools
- Four Middle Schools
- Four High Schools
- One Center School
- Three Charter Schools
- Charlotte Technical College

DEADLY MASS SCHOOL SHOOTINGS SINCE COLUMBINE

AND THE NUMBER OF VICTIMS IN EACH



The Secret Sauce



FULL SYSTEM INTEGRATION

Re-use of some existing equipment to create a centrally managed security platform integrating:



Video Surveillance



IP Phone Systems



Public Address (PA) Systems



Access Control



Fire Alarm Systems



Panic Systems



Burglar Alarm Systems



Lockdown System



Intercom Systems



Visitor Management System

One Button Lock Down on the News



One Button LockDown

A comprehensive series of planned, coordinated and executed actions notify, speed help, and communicate with your community, in a calm, orderly, efficient fashion.



Police Notification



Mass Notification



Computer Screen Notification



Check for Ajar Doors



Lock Classroom Doors



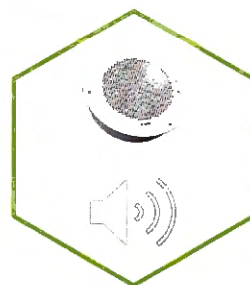
Strobe Light



IP Phone Notification



Disable Card Access



PA Announcement



Website Notification



Digital Signage Notification



One Button LockDown

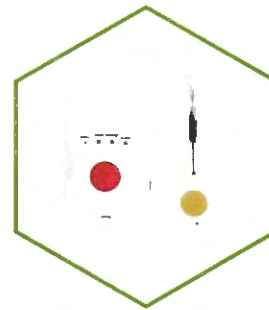
A broad range of options to initiate lock-down reflects preparation despite the impossible-to-predict nature of a crisis. Initiate from an iPad, a Smart phone, a click of a mouse, a hard-wired panic button or an IP telephone system and more. Fast, easy and no guess-work.



Wall Mounted
Emergency
Button



Mobile
Device App



Wired or Wireless
Panic



IP Phone



Computer Keyboard



ILS VMS Software



Ipad or Tablet



Proposed Sales Tax Project Scoring Worksheet

Name: _____ **Project Name:** School Security Infrastructure Project
Project Category: Public Safety
Total Project Cost: \$5,000,000.00

Q	CRITERIA	3	2	1	CRITERIA SCORE
1	Will the project impact public health and safety?	Alleviate existing or potential health/safety hazard	Will promote or maintain health/safety	No impact	
2	Will the project foster economic development and create long-term jobs?	Both	Economic Development or long-term job creation	Neither	
3	Will the project result in decreased, increased, or no operation and maintenance (O&M) costs?	Decrease O&M costs	No or minimal impact on O&M costs	Result in new O&M costs	
4	Will sales tax allow for application of grant funds from another entity?	Application of matching grant funds	Application of some grant funds	No	
5	Will the project enable furtherance of phased projects from 2014 sales tax extension?	Furtherance of additional phases	Minimal work to previously funded projects	No	
6	Is this a joint project with another entity?	Multiple other entities	One other entity	No	
7	Will the project meet a community obligation to serve a special needs segment of the County's population, such as: low-income, aged, or minorities?	Multiple special needs segments	One special needs segment	No	
8	Is the project included in the 20 year Capital Needs Assessment, a Master Plan and/or Comprehensive Plan?	Both	Master Plan or Comprehensive Plan	Neither	
9	Will the project impact environmental quality of the County?	Significantly improve	No or minimal impact	Negatively impact	
10	Percentage of population served	50% or more	25%-49%	Less than 25%	
11	Will the project improve quality of life in Charlotte County?	Significantly improve	No or minor improvements	Negatively impact	
12	Is the project state or federally mandated?	State and Federally Mandated	State or Federally Mandated	No	

Team Parkside CRA

Organization & Contact: Team Parkside CRA ,Board President-Stephen Carter- 941-625-4175,director@theculturalcenter.com

Area: Team Parkside CRA

Location: Harbor Blvd. and Aaron intersection- easy access to Promenades Mall and business area

Category: Quality of Life and Infrastructure

Focus Area(s): Economic and Community Development, Infrastructure

Need:

This project is needed to connect District Areas in Parkside CRA with Multi Use Bridges. These bridges will make it easy for our residents to walk in the Parkside area. The goal of the CRA is to make the Parkside District a Great Destination, a Great Place to live, work and play. The Citizens Master Plan was developed pursuant to FS163.360 to come up with a plan to revitalize the area. The district is made up of 1,100 acres and it has served as the heart of Charlotte county's commerce for a large portion of the County's history. The district has approximately 8,000 residents, 800 businesses, two hospitals, a major mall, one large auto dealership, the Cultural Center of Charlotte County, Inc. , Port Charlotte Library, many medical, financial and commercial businesses. Almost every county resident has relied on the businesses and services within the district at one time or another. The area represents all age groups, with approximately one third youth, one third seniors and one third young to middle age adults. The area possess a strong mix of social and cultural assets which, properly reconfigured, would transform this area from simply serving as a place to go for a doctor or hospital visit to an active and bustling pedestrian oriented community area with inviting commercial, cultural, recreation and public open spaces. This redevelopment will make the Parkside CRA the center of activity in Port Charlotte. It is well on the way and this project would further the revitalization of the area.

Purpose:

To make Parkside area the hub of activity again in Port Charlotte

Objectives:

Multi use bridge

Project Cost Prior Funding:	\$ 0
Project Cost Prior from Sales Tax:	\$0
Total Project Cost:	\$350,000
Project Cost Required New Sales Tax:	350,000
Annual Operating Cost:	\$5,000

Will the project impact public health and safety?

Yes, pedestrian bridge would provide a healthy and safe way to get around in the Parkside area

Will sales tax allow for application of grant funds from another entity?

Yes, possible grant opportunities

Will the project foster economic development and create long-term jobs?

Yes, the pedestrian traffic will provide more people access to local businesses . With or without a vehicle people will be able to get to Promenades Mall, area businesses and medical appointments more easily.

Will the project enable furtherance of phased projects from 2014 sales tax extension?

Yes, work in conjunction with continuation of Team Parkside CRA

Is this a joint project with another entity?

Possibly to have private partnership

Will the project result in decreased, increased, or no operation and maintenance (O&M) costs?

Minimal maintenance over time

Will the project meet a community obligation to serve a special needs segment of the County's population, such as: low-income, aged, or minorities?

Yes, low income and aged population

Is the project included in a Master Plan, Comprehensive Plan, or Capital Needs Assessment?

Yes, Team Parkside Master Plan for Pedestrian Bridges

Will the project impact environmental quality of Charlotte County?

Yes, reduce vehicle traffic. Increase pedestrian and bicycle traffic in the area. It will enhance the area and make it walkable area.

Will the project improve quality of life in Charlotte County?

Yes, improve wellness in Parkside.

Is the project state or federally mandated?

No

Is the project dependent upon or connected with the completion of another project?

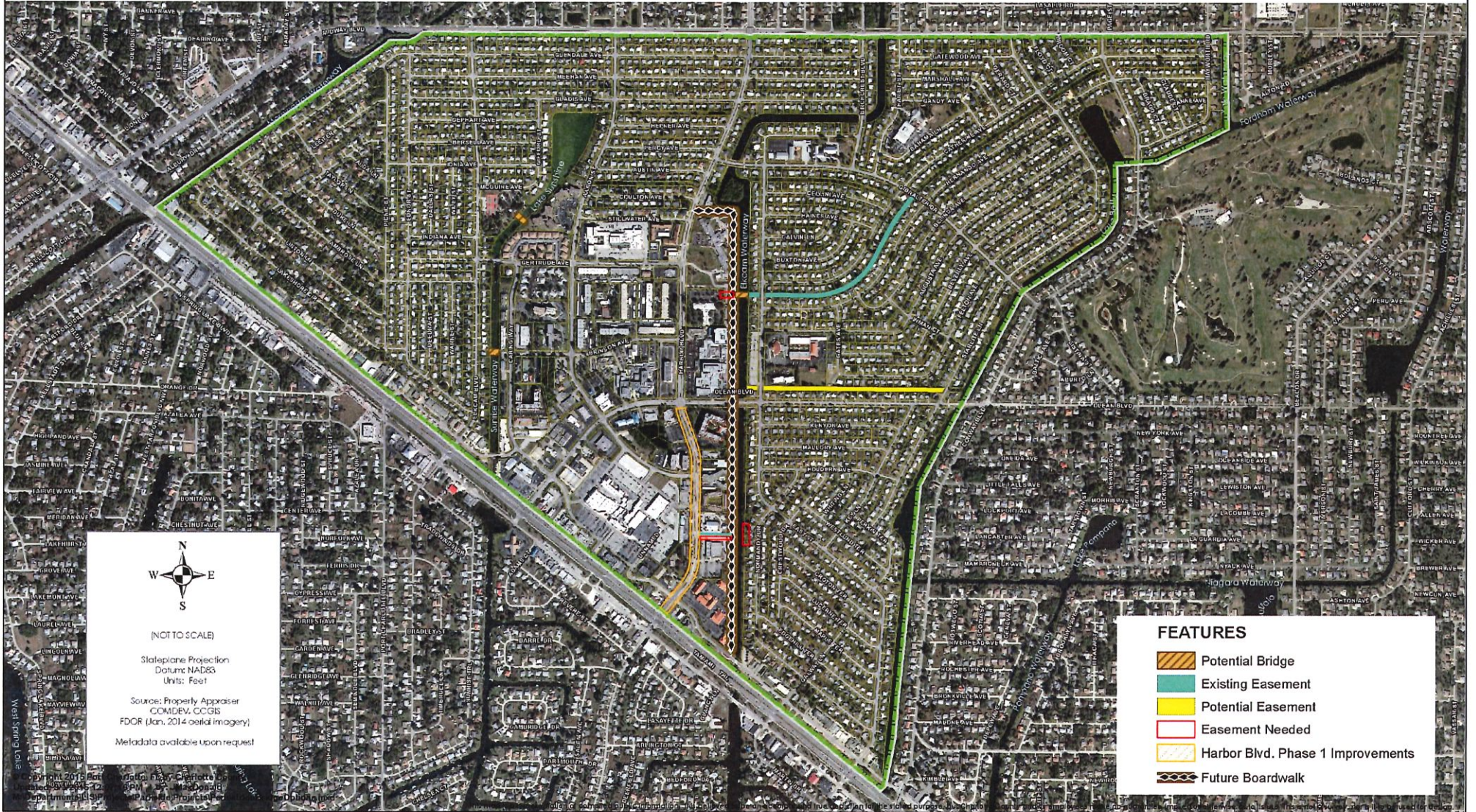
No, the area of Olean Blvd. and Harbor is being renovated. The Promenades mall has plans to continue upgrades to their mall property

PROPOSAL



Parkside Community Redevelopment Area

Pedestrian Bridge Options



(NOT TO SCALE)

Stateplane Projection
Datum: NAD83
Units: Feet
Source: Property Appraiser
COMDEV, CCGIS
FDOR (Jan. 2014 aerial imagery)
Metadata available upon request

FEATURES	
	Potential Bridge
	Existing Easement
	Potential Easement
	Easement Needed
	Harbor Blvd. Phase 1 Improvements
	Future Boardwalk

Proposed Sales Tax Project Scoring Worksheet

Name: _____

Project Name: Team Parkside CRA

Project Category: Quality of Life

Total Project Cost: \$350,000.00

Q	CRITERIA	3	2	1	CRITERIA SCORE
1	Will the project impact public health and safety?	Alleviate existing or potential health/safety hazard	Will promote or maintain health/safety	No impact	
2	Will the project foster economic development and create long-term jobs?	Both	Economic Development or long-term job creation	Neither	
3	Will the project result in decreased, increased, or no operation and maintenance (O&M) costs?	Decrease O&M costs	No or minimal impact on O&M costs	Result in new O&M costs	
4	Will sales tax allow for application of grant funds from another entity?	Application of matching grant funds	Application of some grant funds	No	
5	Will the project enable furtherance of phased projects from 2014 sales tax extension?	Furtherance of additional phases	Minimal work to previously funded projects	No	
6	Is this a joint project with another entity?	Multiple other entities	One other entity	No	
7	Will the project meet a community obligation to serve a special needs segment of the County's population, such as: low-income, aged, or minorities?	Multiple special needs segments	One special needs segment	No	
8	Is the project included in the 20 year Capital Needs Assessment, a Master Plan and/or Comprehensive Plan?	Both	Master Plan or Comprehensive Plan	Neither	
9	Will the project impact environmental quality of the County?	Significantly improve	No or minimal impact	Negatively impact	
10	Percentage of population served	50% or more	25%-49%	Less than 25%	
11	Will the project improve quality of life in Charlotte County?	Significantly improve	No or minor improvements	Negatively impact	
12	Is the project state or federally mandated?	State and Federally Mandated	State or Federally Mandated	No	

TRINGALI PARK MULTI PURPOSE RINK RENOVATION

Organization & Contact: CCIHA / Tringali Hockey and Sports League,
Rob Kruzal (941) 441-6888 or (941) 24-HOCKEY, Tringalihockey@yahoo.com

Area: ALL

Location: 3460 N. Access Rd. Englewood FL 34224

Category: (Quality of Life, Infrastructure, Public Safety, Schools)

Focus Area(s): (Public Services, Economic and Community Development, Infrastructure, Efficient & Effective Government)

Need:

The Tringali Rink attempted to be renovated in 2018. Due to several problems. Today the rink is still closed only being open for a few months in the last 2 years. The growth of the area warrant renovation to provide safe and affordable activities for all the local residents to meet the level of service in upcoming years.

Purpose:

Ensure Tringali Park provides safe and affordable sports activities and operations for the public.

Objectives:

Repair and improve infrastructure. Improvements needed include: repairing and treating concrete surface and fiberglass boards. Install new overhead structure to reduce heat related injuries and to prolong the integrity and life of the rink

Project Cost Prior Funding:	\$26,000
Project Cost Prior from Sales Tax:	\$0
Total Project Cost:	\$0
Project Cost Required New Sales Tax:	\$500,000
Annual Operating Cost:	\$0

Will the project impact public health and safety? If so, how?

Yes, additional shade will reduce heat related injuries throughout the year while protecting the rink from breaking down.

Will the project foster economic development and create long-term jobs? If so, how?

Yes. The more people who use this facility also stop at local establishments. Stores, restaurants etc....

Will the project result in decreased, increased, or no operation and maintenance (O&M) costs?

Should decrease due to lower maintenance cost.

Will sales tax allow for application of grant funds from another entity?

No

Will the project enable furtherance of phased projects from 2014 sales tax extension?

No

Is this a joint project with another entity?

No

Will the project meet a community obligation to serve a special needs segment of the County's population, such as: low-income, aged, or minorities?

Yes. We have had people from all ages and ethnicities play. We do not charge for open (family) sports (hockey, arena soccer, basketball , tennis)

Is the project included in a Master Plan, Comprehensive Plan, or Capital Needs Assessment?

I do not know.

Will the project impact environmental quality of Charlotte County? If so, how?

No

Will the project improve quality of life in Charlotte County?

Yes. By providing a safe environment for families to gather and enjoy.

Is the project state or federally mandated?

No

Is the project dependent upon or connected with the completion of another project?

I do not know.

GENERAL PROJECT DATA:						Status		New		CONCURRENCY REQUIREMENTS		(Y/N)		PROJECT NEED CRITERIA		PROJECT SCHEDULE		FY20		FY21		FY22		FY23		FY24		FY25																																																																																																																																																																																																																																																																																																																																																																																																																																																																																																										
Project Title:						Tringali Park Multi Purpose Rink Renovation		Does project add new capacity?		Yes		Is project required to maintain level of service:		Safety		X		Desgn/Arch		X		X																																																																																																																																																																																																																																																																																																																																																																																																																																																																																																																
Functional Area:						Parks and Recreation		- Within 5 years? List project in CIE		N/A		Mandate		X		Land/ROW																																																																																																																																																																																																																																																																																																																																																																																																																																																																																																																						
Department:						Community Services		- From 6 to 10 years? Monitor Annually		N/A		Replace		X		Construct		X		X		X																																																																																																																																																																																																																																																																																																																																																																																																																																																																																																																
Location:						West County						Growth		X		Equipment																																																																																																																																																																																																																																																																																																																																																																																																																																																																																																																						
PROJECT DESCRIPTION:														PROJECT RATIONALE (Include Additional LOS Detail, if necessary):																																																																																																																																																																																																																																																																																																																																																																																																																																																																																																																								
To complete repairs to rink and to create a safer and more year round use of an existing structure for a very fast growing community.																																																																																																																																																																																																																																																																																																																																																																																																																																																																																																																																						
OPERATING BUDGET IMPACT:																																																																																																																																																																																																																																																																																																																																																																																																																																																																																																																																						
Operating cost should remain the same or even go down due to fewer repair costs.																																																																																																																																																																																																																																																																																																																																																																																																																																																																																																																																						
I have estimates from local contractors and vendors from under 2 years ago which brought this in under \$300,000.																																																																																																																																																																																																																																																																																																																																																																																																																																																																																																																																						
Talking with county people I have come up with these figures.																																																																																																																																																																																																																																																																																																																																																																																																																																																																																																																																						
														<table border="1"> <thead> <tr> <th colspan="2"></th> <th colspan="5">Calc. for FY20</th> <th colspan="11"></th> <th colspan="1">Total</th> </tr> <tr> <th>Prior Actual</th> <th>Est FY19</th> <th>Orig. FY20</th> <th>Est c/o to FY20</th> <th>New \$ FY20</th> <th>FY20</th> <th>FY21</th> <th>FY22</th> <th>FY23</th> <th>FY24</th> <th>FY25</th> <th colspan="5">FUTURE</th> <th></th> </tr> </thead> <tbody> <tr> <td colspan="16" style="text-align:center">EXPENDITURE PLAN (000'S)</td> </tr> <tr> <td>Design/Arch/Eng</td> <td></td> <td></td> <td>2,000</td> <td></td> <td>2,000</td> <td></td> <td></td> <td></td> <td></td> <td></td> <td></td> <td></td> <td></td> <td></td> <td></td> <td>2,000</td> </tr> <tr> <td>Land (or ROW)</td> <td></td> <td></td> <td></td> <td></td> <td></td> <td></td> <td></td> <td></td> <td></td> <td></td> <td></td> <td></td> <td></td> <td></td> <td></td> <td></td> </tr> <tr> <td>Construction</td> <td></td> <td></td> <td>475,000</td> <td></td> <td>475,000</td> <td></td> <td></td> <td></td> <td></td> <td></td> <td></td> <td></td> <td></td> <td></td> <td></td> <td>475,000</td> </tr> <tr> <td>Internal Costs</td> <td></td> <td></td> <td></td> <td></td> <td></td> <td></td> <td></td> <td></td> <td></td> <td></td> <td></td> <td></td> <td></td> <td></td> <td></td> <td></td> </tr> <tr> <td>Equipment</td> <td></td> <td></td> <td></td> <td></td> <td></td> <td></td> <td></td> <td></td> <td></td> <td></td> <td></td> <td></td> <td></td> <td></td> <td></td> <td></td> </tr> <tr> <td>Interest</td> <td></td> <td></td> <td></td> <td></td> <td></td> <td></td> <td></td> <td></td> <td></td> <td></td> <td></td> <td></td> <td></td> <td></td> <td></td> <td></td> </tr> <tr> <td>Other Fees & Costs</td> <td></td> <td></td> <td></td> <td></td> <td></td> <td></td> <td></td> <td></td> <td></td> <td></td> <td></td> <td></td> <td></td> <td></td> <td></td> <td></td> </tr> <tr> <td>Utility Relocation/Improvement</td> <td></td> <td></td> <td>15,000</td> <td></td> <td>15,000</td> <td></td> <td></td> <td></td> <td></td> <td></td> <td></td> <td></td> <td></td> <td></td> <td></td> <td>15,000</td> </tr> <tr> <td>Total Project Cost</td> <td></td> <td></td> <td>492,000</td> <td></td> <td>492,000</td> <td></td> <td></td> <td></td> <td></td> <td></td> <td></td> <td></td> <td></td> <td></td> <td></td> <td>492,000</td> </tr> <tr> <td colspan="16" style="text-align:center">FUNDING PLAN (000'S)</td> </tr> <tr> <td></td> <td></td> <td></td> <td>492,000</td> <td></td> <td>492,000</td> <td></td> <td></td> <td></td> <td></td> <td></td> <td></td> <td></td> <td></td> <td></td> <td></td> <td>492,000</td> </tr> <tr> <td></td> <td></td> <td></td> <td></td> <td></td> <td></td> <td></td> <td></td> <td></td> <td></td> <td></td> <td></td> <td></td> <td></td> <td></td> <td></td> <td></td> </tr> <tr> <td></td> <td></td> <td></td> <td></td> <td></td> <td></td> <td></td> <td></td> <td></td> <td></td> <td></td> <td></td> <td></td> <td></td> <td></td> <td></td> <td></td> </tr> <tr> <td></td> <td></td> <td></td> <td></td> <td></td> <td></td> <td></td> <td></td> <td></td> <td></td> <td></td> <td></td> <td></td> <td></td> <td></td> <td></td> <td></td> </tr> <tr> <td></td> <td></td> <td></td> <td></td> <td></td> <td></td> <td></td> <td></td> <td></td> <td></td> <td></td> <td></td> <td></td> <td></td> <td></td> <td></td> <td></td> </tr> <tr> <td></td> <td></td> <td></td> <td></td> <td></td> <td></td> <td></td> <td></td> <td></td> <td></td> <td></td> <td></td> <td></td> <td></td> <td></td> <td></td> <td></td> </tr> <tr> <td>Total Funding</td> <td></td> <td></td> <td>492,000</td> <td></td> <td>492,000</td> <td></td> <td></td> <td></td> <td></td> <td></td> <td></td> <td></td> <td></td> <td></td> <td></td> <td>492,000</td> </tr> <tr> <td colspan="16" style="text-align:center">LOAN REPAYMENT SCHEDULE (000'S)</td> </tr> <tr> <td></td> <td></td> <td></td> <td></td> <td></td> <td></td> <td></td> <td></td> <td></td> <td></td> <td></td> <td></td> <td></td> <td></td> <td></td> <td></td> <td></td> </tr> <tr> <td></td> <td></td> <td></td> <td></td> <td></td> <td></td> <td></td> <td></td> <td></td> <td></td> <td></td> <td></td> <td></td> <td></td> <td></td> <td></td> <td></td> </tr> <tr> <td></td> <td></td> <td></td> <td></td> <td></td> <td></td> <td></td> <td></td> <td></td> <td></td> <td></td> <td></td> <td></td> <td></td> <td></td> <td></td> <td></td> </tr> <tr> <td>Total Loan Repayment</td> <td></td> <td></td> <td></td> <td></td> <td></td> <td></td> <td></td> <td></td> <td></td> <td></td> <td></td> <td></td> <td></td> <td></td> <td></td> <td></td> </tr> <tr> <td colspan="16" style="text-align:center">OPERATING BUDGET IMPACT (000'S)</td> </tr> <tr> <td>Personal Svc.</td> <td></td> <td></td> <td></td> <td></td> <td></td> <td></td> <td></td> <td></td> <td></td> <td></td> <td></td> <td></td> <td></td> <td></td> <td></td> <td></td> </tr> <tr> <td>Non-personal Capital</td> <td></td> <td></td> <td></td> <td></td> <td></td> <td></td> <td></td> <td></td> <td></td> <td></td> <td></td> <td></td> <td></td> <td></td> <td></td> <td></td> </tr> <tr> <td>Total Operating</td> <td></td> <td></td> <td></td> <td></td> <td></td> <td></td> <td></td> <td></td> <td></td> <td></td> <td></td> <td></td> <td></td> <td></td> <td></td> <td></td> </tr> </tbody> </table>																Calc. for FY20																Total	Prior Actual	Est FY19	Orig. FY20	Est c/o to FY20	New \$ FY20	FY20	FY21	FY22	FY23	FY24	FY25	FUTURE						EXPENDITURE PLAN (000'S)																Design/Arch/Eng			2,000		2,000											2,000	Land (or ROW)																	Construction			475,000		475,000											475,000	Internal Costs																	Equipment																	Interest																	Other Fees & Costs																	Utility Relocation/Improvement			15,000		15,000											15,000	Total Project Cost			492,000		492,000											492,000	FUNDING PLAN (000'S)																			492,000		492,000											492,000																																																																																						Total Funding			492,000		492,000											492,000	LOAN REPAYMENT SCHEDULE (000'S)																																																																			Total Loan Repayment																	OPERATING BUDGET IMPACT (000'S)																Personal Svc.																	Non-personal Capital																	Total Operating																
		Calc. for FY20																Total																																																																																																																																																																																																																																																																																																																																																																																																																																																																																																																				
Prior Actual	Est FY19	Orig. FY20	Est c/o to FY20	New \$ FY20	FY20	FY21	FY22	FY23	FY24	FY25	FUTURE																																																																																																																																																																																																																																																																																																																																																																																																																																																																																																																											
EXPENDITURE PLAN (000'S)																																																																																																																																																																																																																																																																																																																																																																																																																																																																																																																																						
Design/Arch/Eng			2,000		2,000											2,000																																																																																																																																																																																																																																																																																																																																																																																																																																																																																																																						
Land (or ROW)																																																																																																																																																																																																																																																																																																																																																																																																																																																																																																																																						
Construction			475,000		475,000											475,000																																																																																																																																																																																																																																																																																																																																																																																																																																																																																																																						
Internal Costs																																																																																																																																																																																																																																																																																																																																																																																																																																																																																																																																						
Equipment																																																																																																																																																																																																																																																																																																																																																																																																																																																																																																																																						
Interest																																																																																																																																																																																																																																																																																																																																																																																																																																																																																																																																						
Other Fees & Costs																																																																																																																																																																																																																																																																																																																																																																																																																																																																																																																																						
Utility Relocation/Improvement			15,000		15,000											15,000																																																																																																																																																																																																																																																																																																																																																																																																																																																																																																																						
Total Project Cost			492,000		492,000											492,000																																																																																																																																																																																																																																																																																																																																																																																																																																																																																																																						
FUNDING PLAN (000'S)																																																																																																																																																																																																																																																																																																																																																																																																																																																																																																																																						
			492,000		492,000											492,000																																																																																																																																																																																																																																																																																																																																																																																																																																																																																																																						
Total Funding			492,000		492,000											492,000																																																																																																																																																																																																																																																																																																																																																																																																																																																																																																																						
LOAN REPAYMENT SCHEDULE (000'S)																																																																																																																																																																																																																																																																																																																																																																																																																																																																																																																																						
Total Loan Repayment																																																																																																																																																																																																																																																																																																																																																																																																																																																																																																																																						
OPERATING BUDGET IMPACT (000'S)																																																																																																																																																																																																																																																																																																																																																																																																																																																																																																																																						
Personal Svc.																																																																																																																																																																																																																																																																																																																																																																																																																																																																																																																																						
Non-personal Capital																																																																																																																																																																																																																																																																																																																																																																																																																																																																																																																																						
Total Operating																																																																																																																																																																																																																																																																																																																																																																																																																																																																																																																																						

TRINGALI PARK MULTI PURPOSE RINK RENOVATION

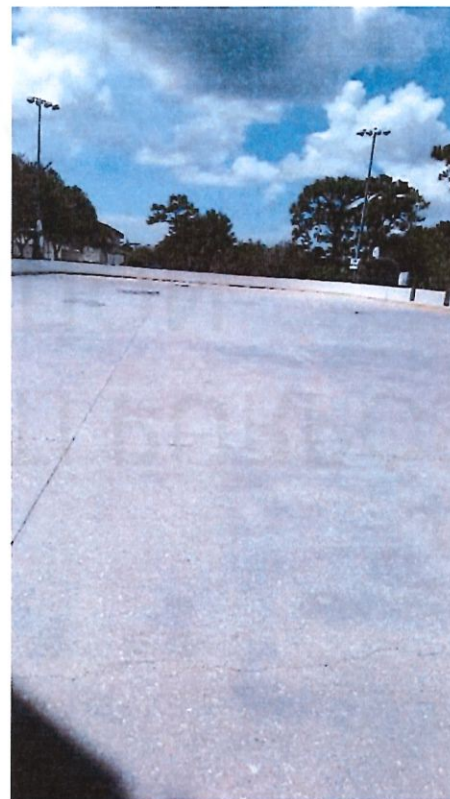
PROPOSED BY
CHARLOTTE COUNTY INLIE HOCKEY
ASSO. (CCIHA) / TRINGALI HOCKEY and
SPORTS LEAGUE

Get kids involved again.

This is what it was.



This is how it is now.



Get parents back outside playing with their kids



Creating a safe and inviting atmosphere.

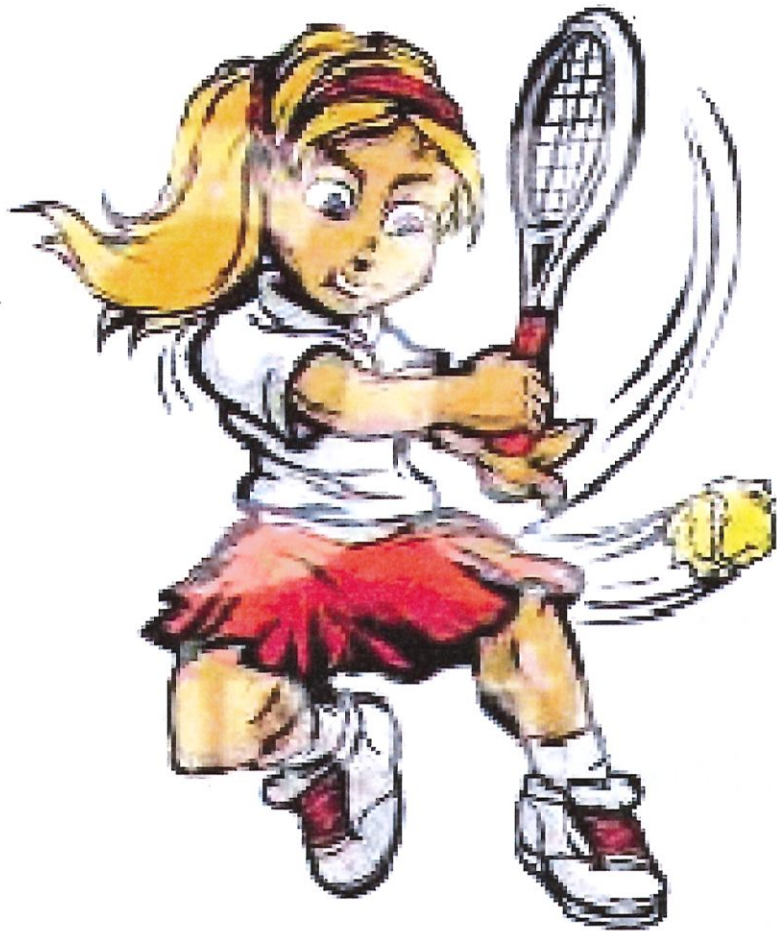


**NEW TO
TRINGALI SPORTS
LEAGUE**

Tennis....

Soccer....

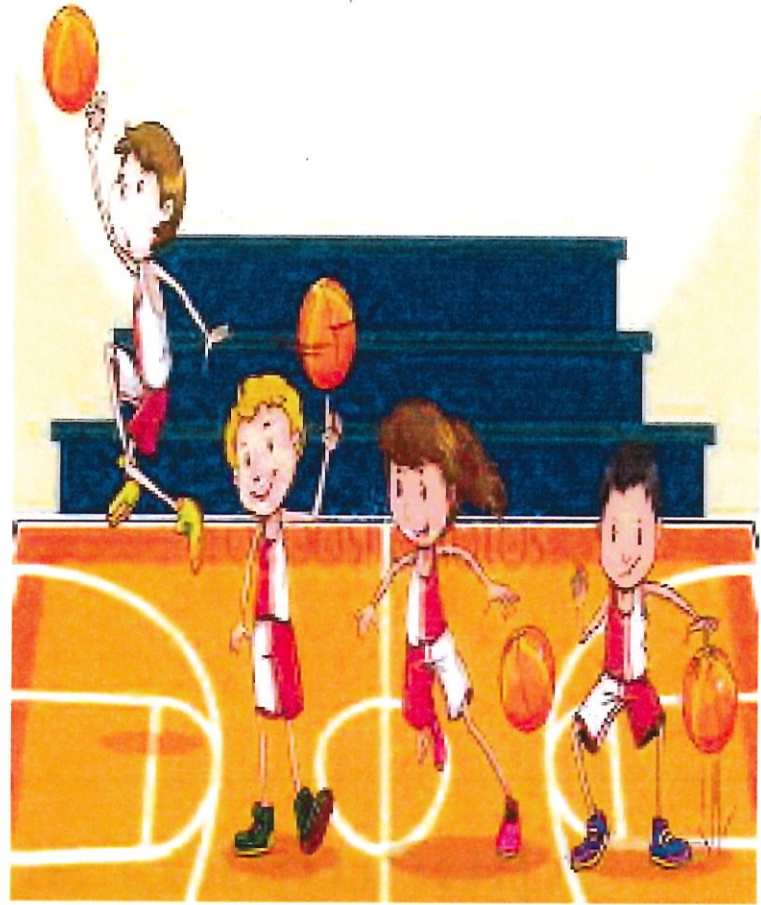
Basketball...



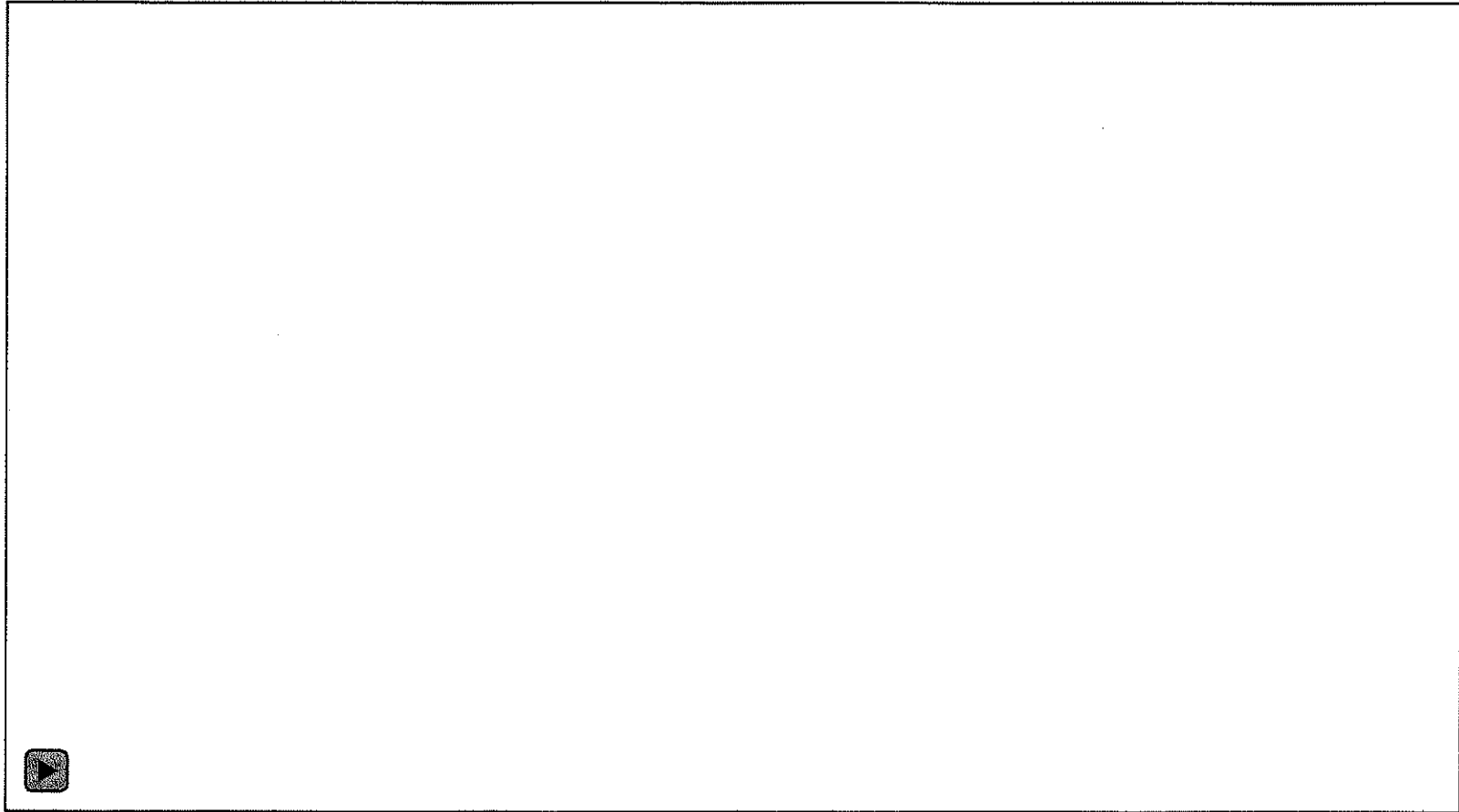
www.clipartof.com · 1161163



[©Kidsfranz.com](http://www.kidsfranz.com)



Lets get back to neighborhood fun for
the family and the community.



Proposed Sales Tax Project Scoring Worksheet

Name: _____

Project Name: Tringali Park Multipurpose Rink Renovation

Project Category: Quality of Life

Total Project Cost: \$500,000.00

Q	CRITERIA	3	2	1	CRITERIA SCORE
1	Will the project impact public health and safety?	Alleviate existing or potential health/safety hazard	Will promote or maintain health/safety	No impact	
2	Will the project foster economic development and create long-term jobs?	Both	Economic Development or long-term job creation	Neither	
3	Will the project result in decreased, increased, or no operation and maintenance (O&M) costs?	Decrease O&M costs	No or minimal impact on O&M costs	Result in new O&M costs	
4	Will sales tax allow for application of grant funds from another entity?	Application of matching grant funds	Application of some grant funds	No	
5	Will the project enable furtherance of phased projects from 2014 sales tax extension?	Furtherance of additional phases	Minimal work to previously funded projects	No	
6	Is this a joint project with another entity?	Multiple other entities	One other entity	No	
7	Will the project meet a community obligation to serve a special needs segment of the County's population, such as: low-income, aged, or minorities?	Multiple special needs segments	One special needs segment	No	
8	Is the project included in the 20 year Capital Needs Assessment, a Master Plan and/or Comprehensive Plan?	Both	Master Plan or Comprehensive Plan	Neither	
9	Will the project impact environmental quality of the County?	Significantly improve	No or minimal impact	Negatively impact	
10	Percentage of population served	50% or more	25%-49%	Less than 25%	
11	Will the project improve quality of life in Charlotte County?	Significantly improve	No or minor improvements	Negatively impact	
12	Is the project state or federally mandated?	State and Federally Mandated	State or Federally Mandated	No	