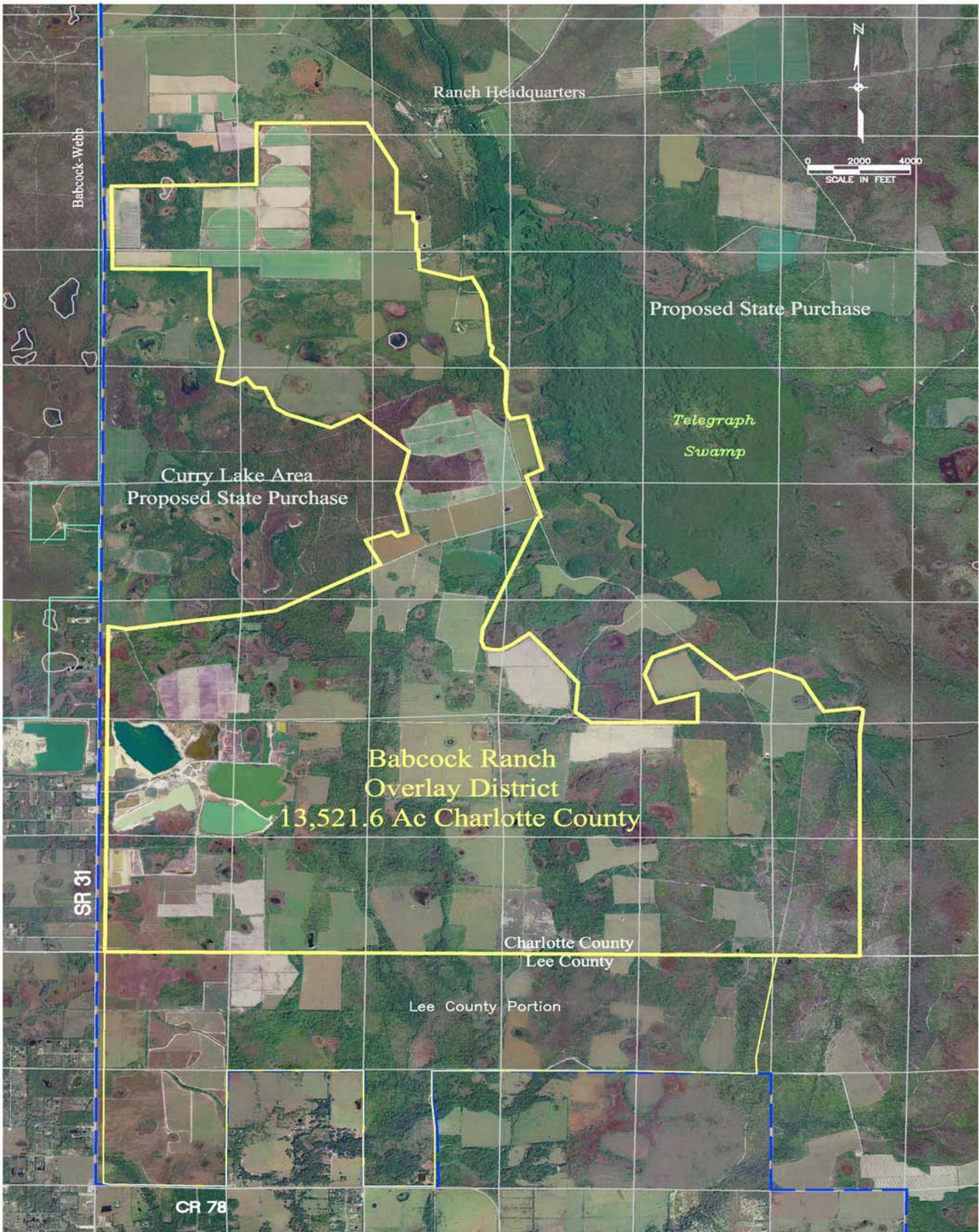


Babcock Ranch Overlay District Map # 11

Aerial Map



NOTES:
 1. Aerial is from USGS DOQ inventory dated 2004. Lee County portion of property is shown for illustrative purposes only, will be addressed separately with Lee County and will not be adopted as a part of the Charlotte County plan.



Originally prepared by Johnson Engineering

This map is a representation of compiled public information. It is believed to be an accurate and true depiction for the stated purpose, but Charlotte County and its employees make no guaranties, implied or otherwise as to its use. This is not a survey or is it to be used for design.