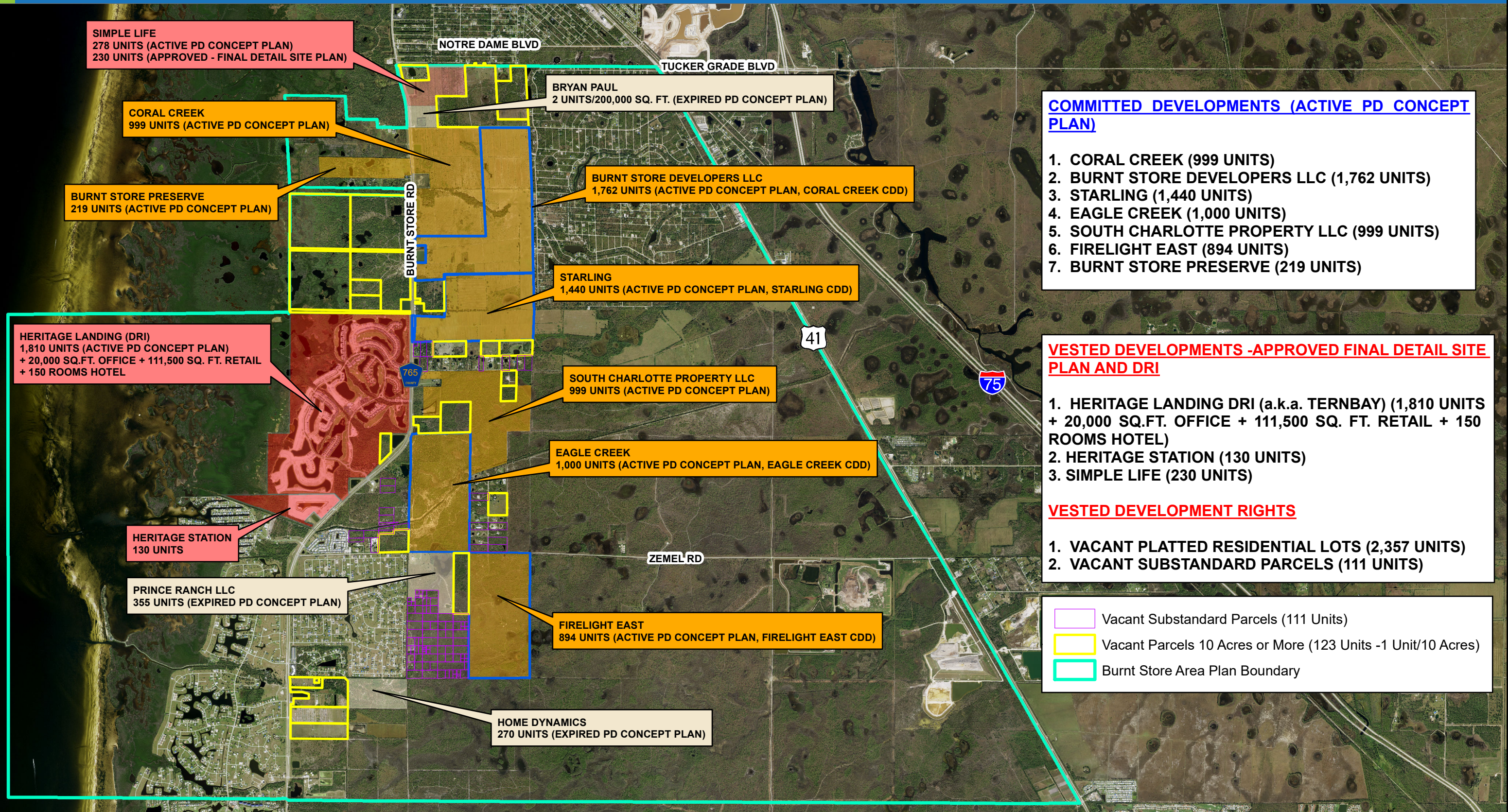


CHARLOTTE COUNTY PLANNED DEVELOPMENTS (PDs) WITHIN THE BURNT STORE AREA PLAN



SIMPLE LIFE
278 UNITS (ACTIVE PD CONCEPT PLAN)
230 UNITS (APPROVED - FINAL DETAIL SITE PLAN)

CORAL CREEK
999 UNITS (ACTIVE PD CONCEPT PLAN)

BURNT STORE PRESERVE
219 UNITS (ACTIVE PD CONCEPT PLAN)

HERITAGE LANDING (DRI)
1,810 UNITS (ACTIVE PD CONCEPT PLAN)
+ 20,000 SQ.FT. OFFICE + 111,500 SQ. FT. RETAIL
+ 150 ROOMS HOTEL

HERITAGE STATION
130 UNITS

PRINCE RANCH LLC
355 UNITS (EXPIRED PD CONCEPT PLAN)

HOME DYNAMICS
270 UNITS (EXPIRED PD CONCEPT PLAN)

NOTRE DAME BLVD

TUCKER GRADE BLVD

BRYAN PAUL
2 UNITS/200,000 SQ. FT. (EXPIRED PD CONCEPT PLAN)

BURNT STORE DEVELOPERS LLC
1,762 UNITS (ACTIVE PD CONCEPT PLAN, CORAL CREEK CDD)

STARLING
1,440 UNITS (ACTIVE PD CONCEPT PLAN, STARLING CDD)

SOUTH CHARLOTTE PROPERTY LLC
999 UNITS (ACTIVE PD CONCEPT PLAN)

EAGLE CREEK
1,000 UNITS (ACTIVE PD CONCEPT PLAN, EAGLE CREEK CDD)

FIRELIGHT EAST
894 UNITS (ACTIVE PD CONCEPT PLAN, FIRELIGHT EAST CDD)

ZEMEL RD

41

75

COMMITTED DEVELOPMENTS (ACTIVE PD CONCEPT PLAN)




1. CORAL CREEK (999 UNITS)
2. BURNT STORE DEVELOPERS LLC (1,762 UNITS)
3. STARLING (1,440 UNITS)
4. EAGLE CREEK (1,000 UNITS)
5. SOUTH CHARLOTTE PROPERTY LLC (999 UNITS)
6. FIRELIGHT EAST (894 UNITS)
7. BURNT STORE PRESERVE (219 UNITS)

VESTED DEVELOPMENTS -APPROVED FINAL DETAIL SITE PLAN AND DRI

1. HERITAGE LANDING DRI (a.k.a. TERNBAY) (1,810 UNITS + 20,000 SQ.FT. OFFICE + 111,500 SQ. FT. RETAIL + 150 ROOMS HOTEL)
2. HERITAGE STATION (130 UNITS)
3. SIMPLE LIFE (230 UNITS)

VESTED DEVELOPMENT RIGHTS

1. VACANT PLATTED RESIDENTIAL LOTS (2,357 UNITS)
2. VACANT SUBSTANDARD PARCELS (111 UNITS)

-  Vacant Substandard Parcels (111 Units)
-  Vacant Parcels 10 Acres or More (123 Units -1 Unit/10 Acres)
-  Burnt Store Area Plan Boundary

This map is a representation of compiled public information. It is believed to be an accurate and true depiction for the stated purpose, but Charlotte County and its employees make no guaranties, implied or otherwise, to the accuracy, or completeness. We therefore do not accept any responsibilities as to its use. This is not a survey or is it to be used for design. Reflected Dimensions are for Informational purposes only and may have been rounded to the nearest tenth. For precise dimensions, please refer to recorded plats and related documents.