

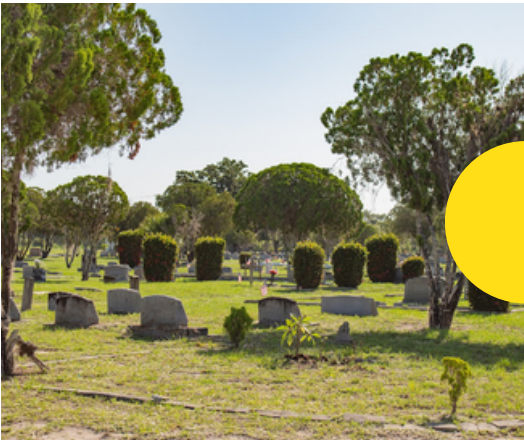
How many cemeteries does Charlotte County own?

Charlotte County owns four historical cemeteries: Indian Spring, Lieutenant Carl Bailey, Hickory Bluff, and Southland Trail.

Indian Spring and Lt. Carl Bailey are *active* cemeteries, which allow burials, and the other two are *inactive*, meaning burials are not permitted.

Can I or a loved one, be interred/inurned at all County-owned cemeteries?

No. Indian Spring and Lt. Carl Bailey are the only county-owned cemeteries that allow burials and have spaces available for purchase. Please contact [941.575.3600](tel:941.575.3600) for more information.



How much does a space cost?

Each space costs **\$950**.

Payable by cash or check addressed to:
Charlotte County Board of County Commissioners

How do I purchase a space?

If you wish to purchase a space or would like to be shown around the the cemetery grounds to determine which space(s) to purchase, please contact [941.575.3600](tel:941.575.3600) to schedule an appointment.

What we do:

Public Works maintains the cemetery grounds and records in perpetuity.

Public Works must have a **5-7** business day notice to provide staff with enough time to GPR (ground penetrating radar), and flag and mark spaces before any funeral/graveside services. **No exceptions.**

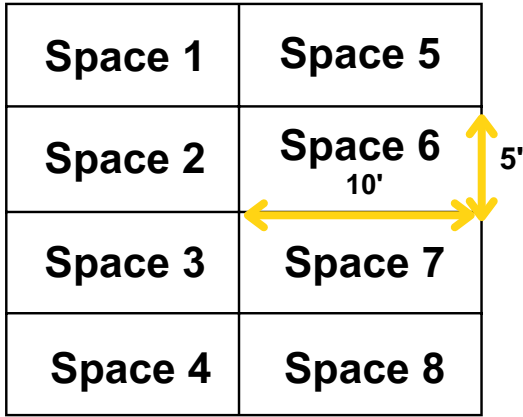
Public Works **does not** conduct interments, inurnments, funeral services, including the opening or closing of a gravesite. Public Works **does not** perform headstone installations or headstone maintenance.

It is the responsibility of the owner or family members of the deceased to coordinate with a funeral home to conduct the above services. The funeral home must coordinate a date and time with Public Works to perform the above services.

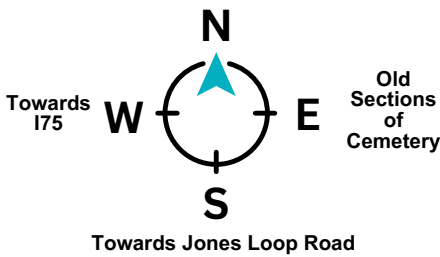


Indian Spring Cemetery FAQs

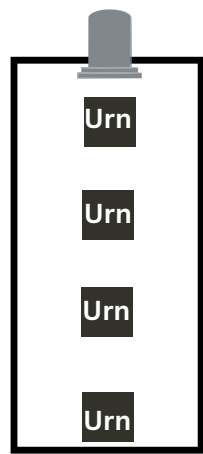
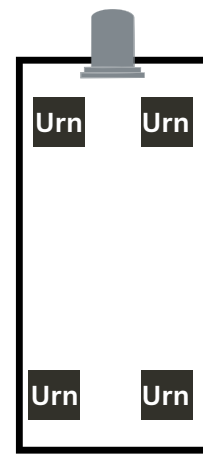
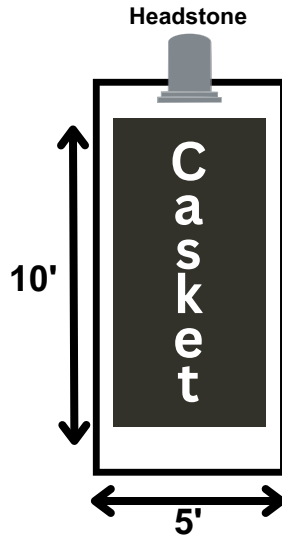
Lot Layout



Towards back wooded area



There are 8 spaces in 1 lot
 Each space is 5 ft by 10 ft
Potential Space Layout
 One casket and 2 sets of cremains
 OR
 4 sets of cremains in ONE space



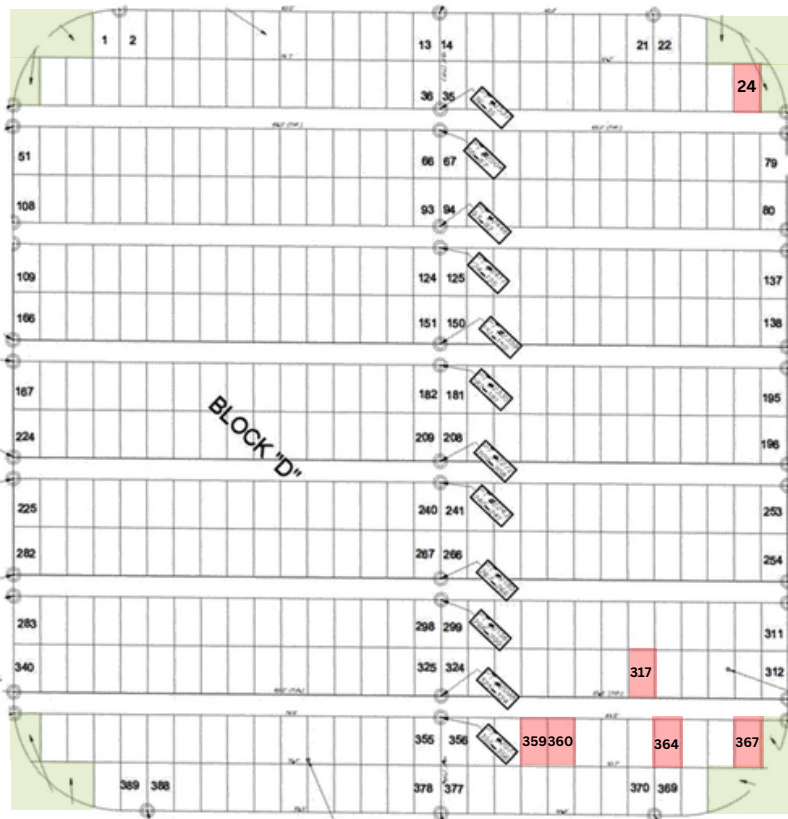
Lt. Carl Bailey Cemetery FAQs

Only burials in the new platted section (see below) of Carl Bailey are permitted. There are no burials allowed in the older section.

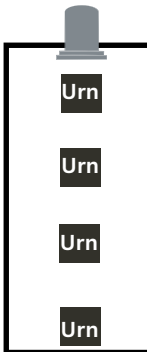
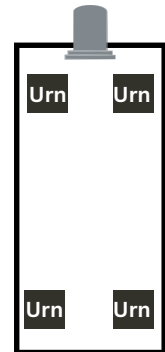
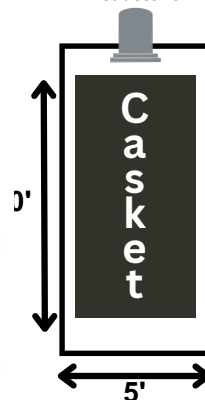
There are no lots at Carl Bailey, only individual spaces

Each space is 5 ft by 10 ft

Potential Space Layout
 One casket and 2 sets of cremains
 OR
 4 sets of cremains in ONE space



Headstone



■ = occupied space

Road