



PLACIDA BOAT RAMP WEST EXPANSION

BOARD OF COUNTY
COMMISSIONERS MEETING

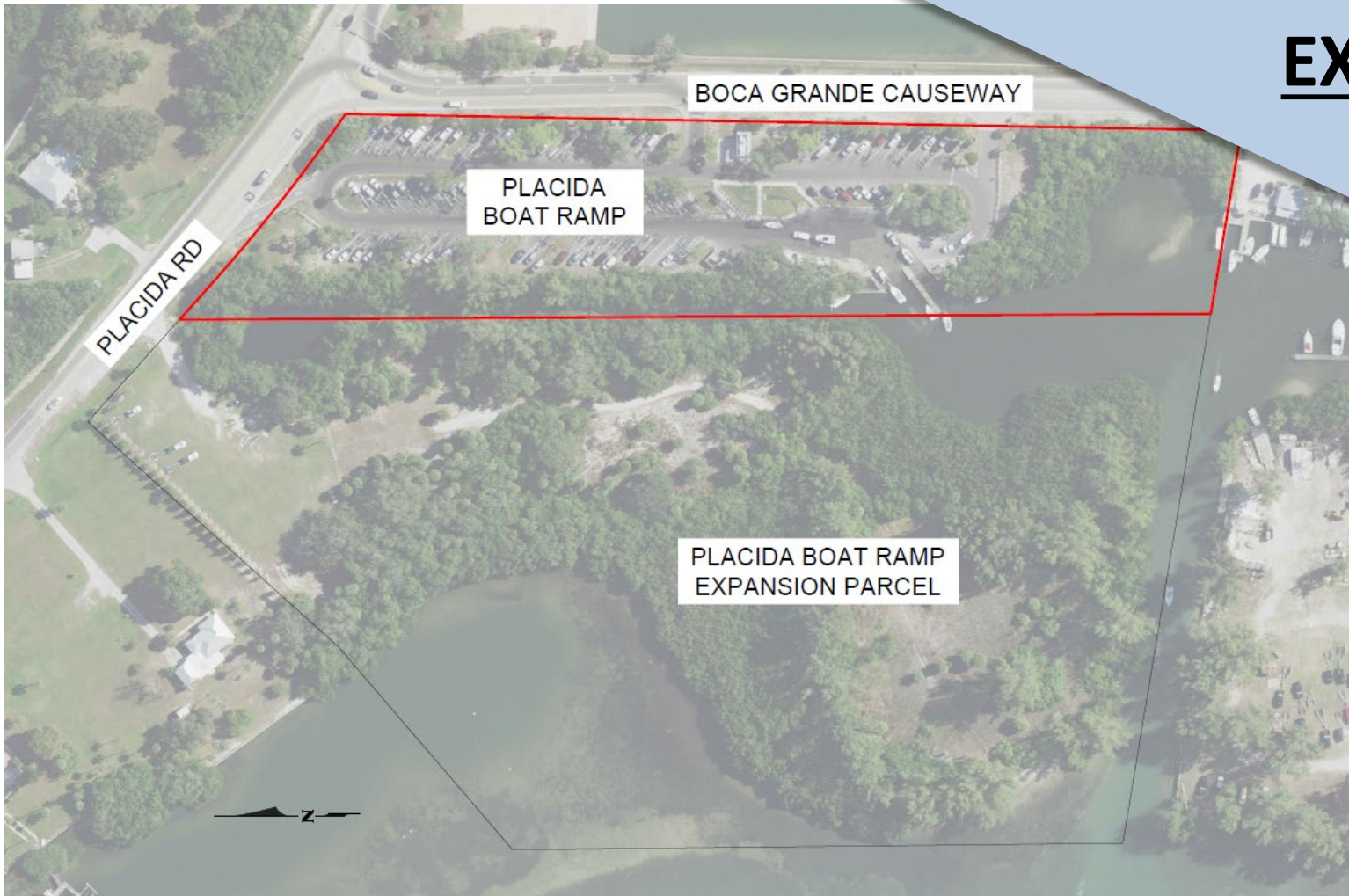
APRIL 12, 2022



LOCATION



EXISTING PARK



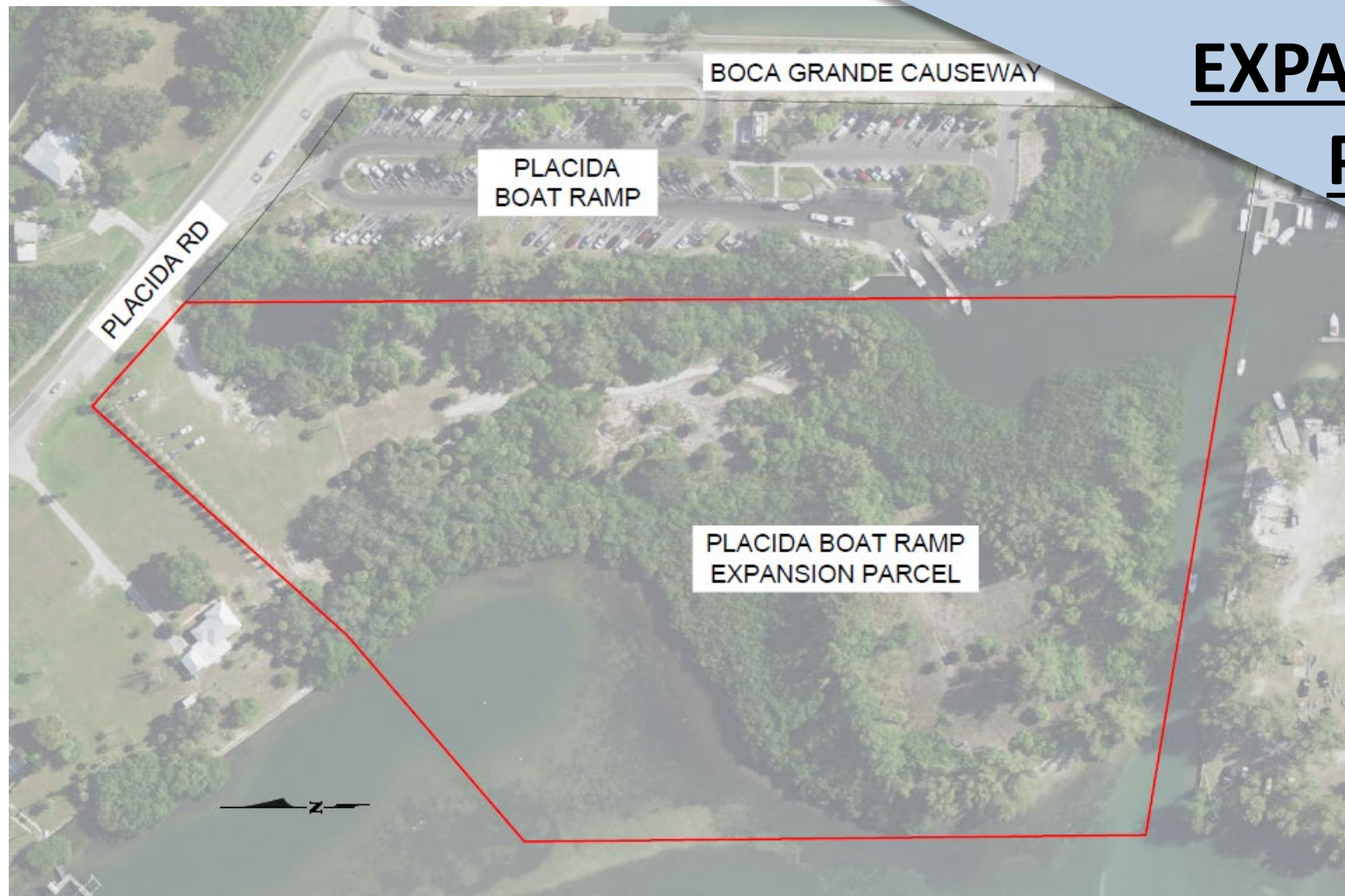
EXISTING PARK

Features

- 5.6± AC (4± AC above MHW)
- 3 launch lanes/3 boarding piers
- 79 boat trailer parking spaces
- Ice vending machine



EXPANSION PARCEL



EXPANSION PARCEL

Features

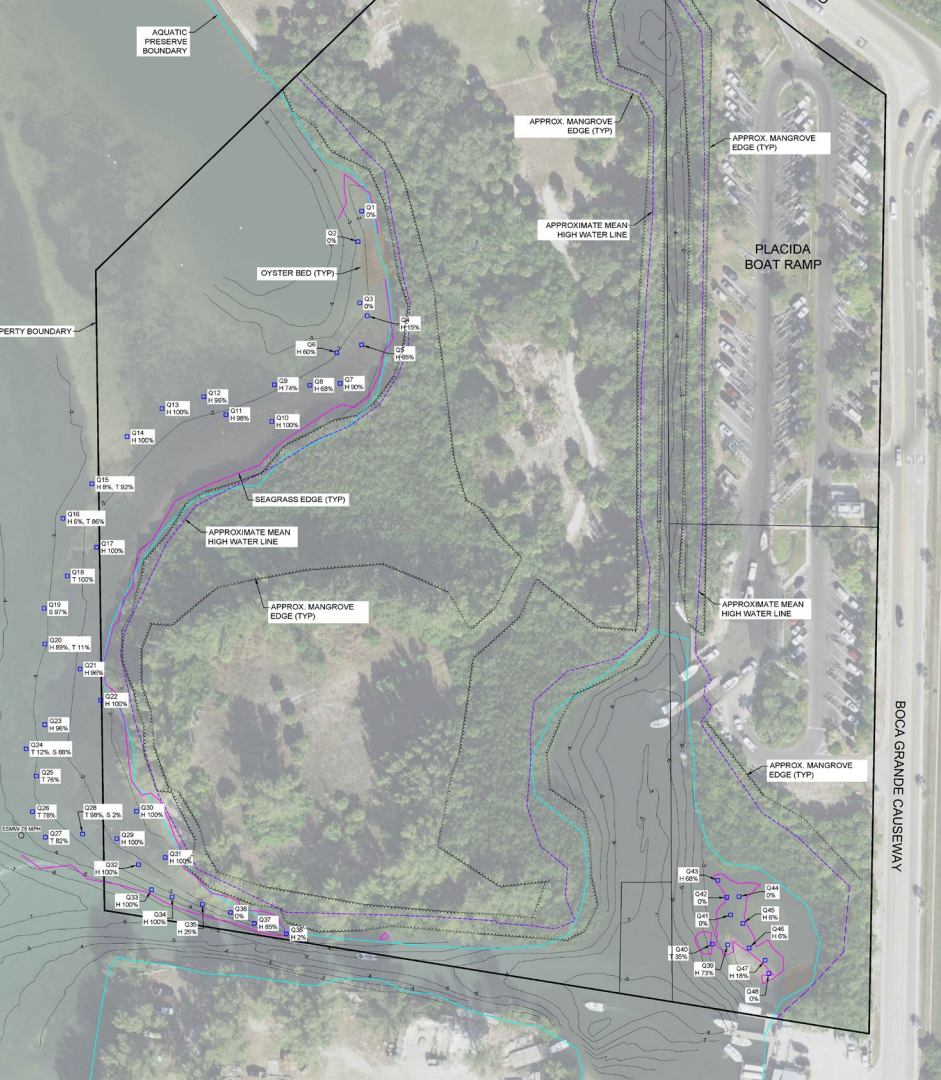
- 14.2± AC (9± AC above MHW)
- Provides overflow parking for existing park (36 parking spaces)
- Property mostly unimproved



MASTER PLAN

Boat Ramp Siting

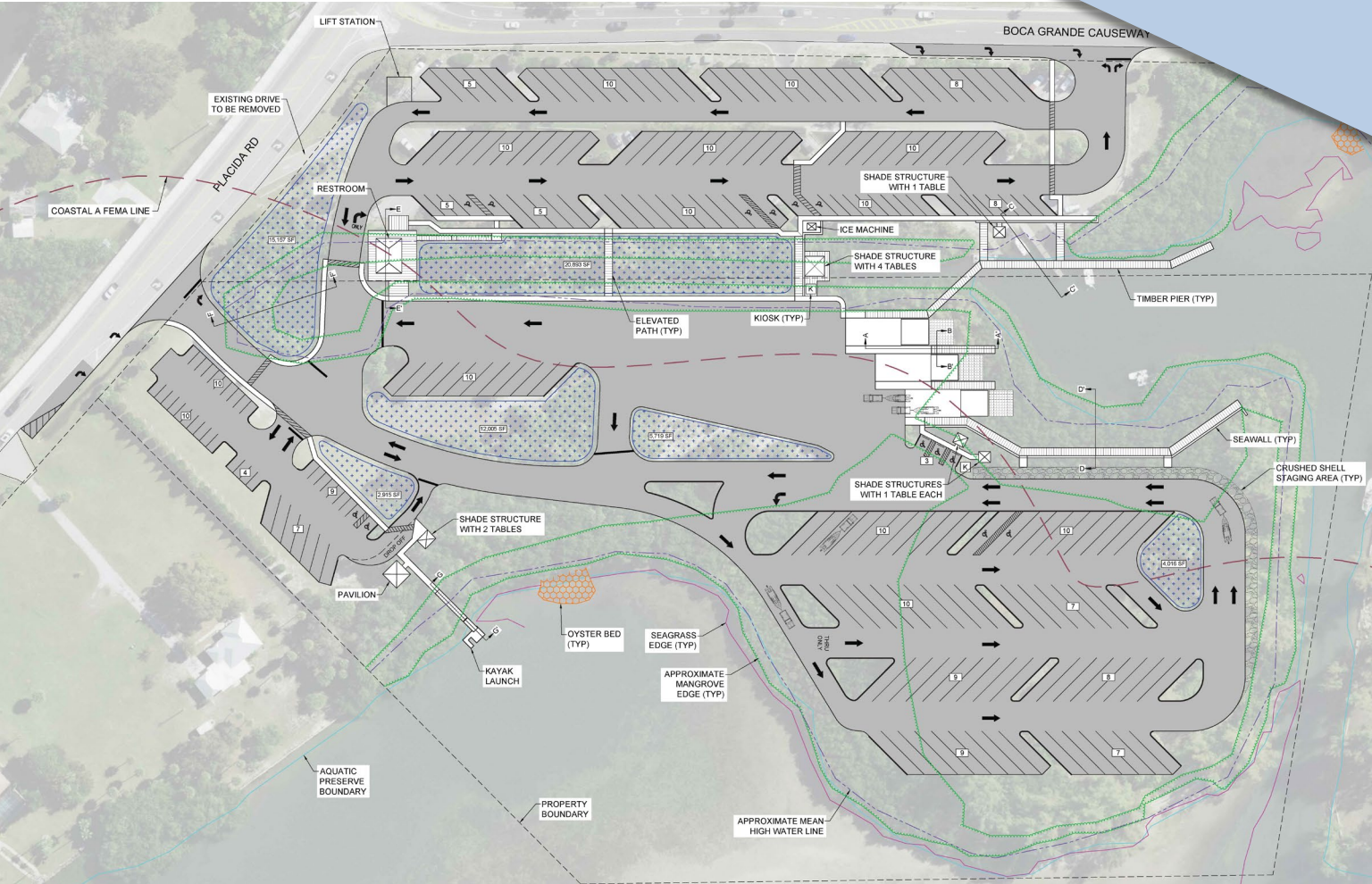
- Avoid submerged aquatic vegetation
- Avoid navigation impacts to entrance channel and within basin
- Respect Aquatic Preserve Boundary



Features

- **One large, interconnected park (15± AC)**
- **158 boat trailer parking spaces (~43 increase)
(Charlotte County MPP ~ 188 trailer spaces)**
- **6 launch lanes with boarding piers**
- **Centrally located restroom**
- **ADA accessible kayak launch**
- **Pavilions / shade structures and ice vending machine**
- **Accessible from Placida Road & Boca Grande Causeway**

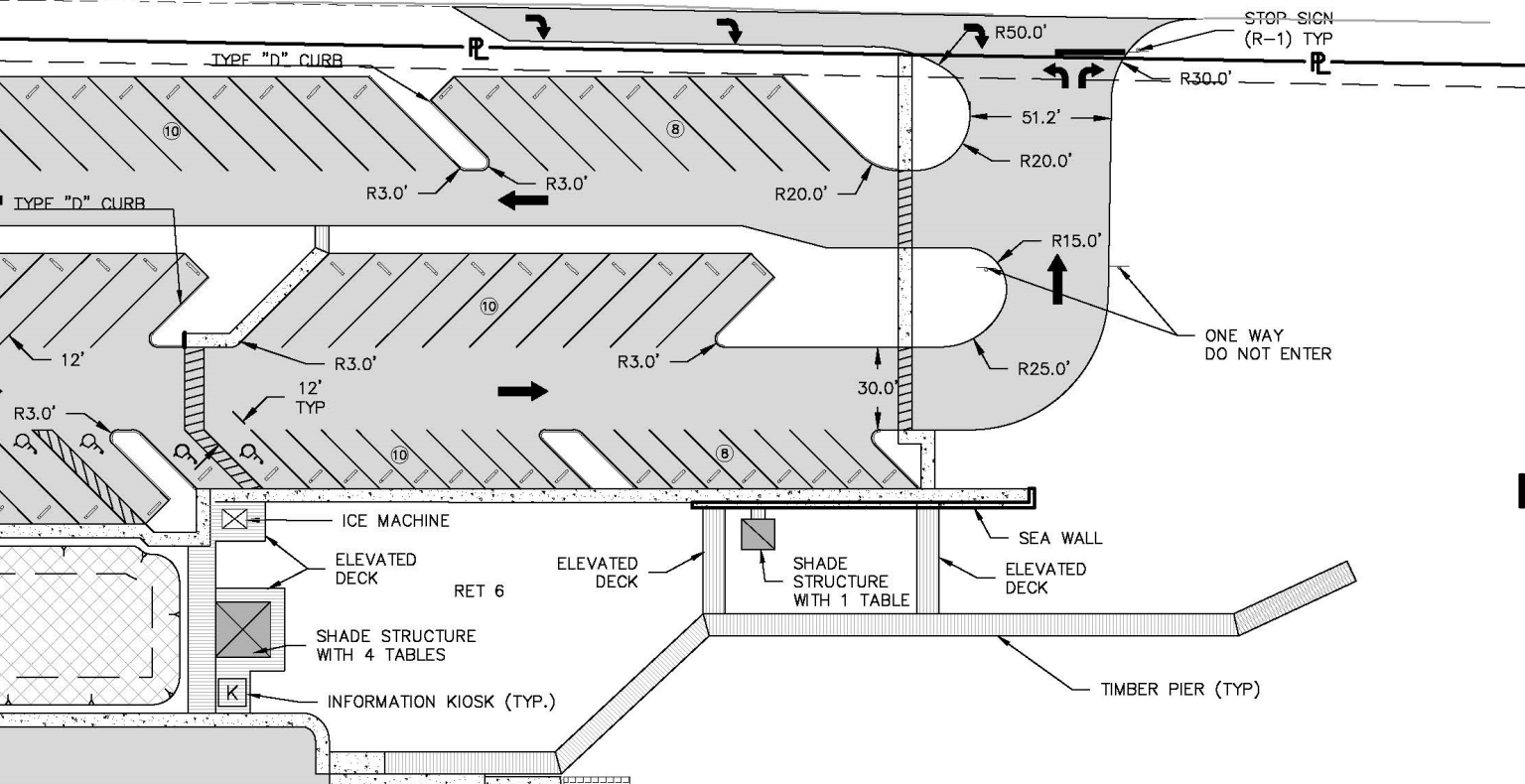
MASTER PLAN



Schematic
Design Site Plan
Spring 2022

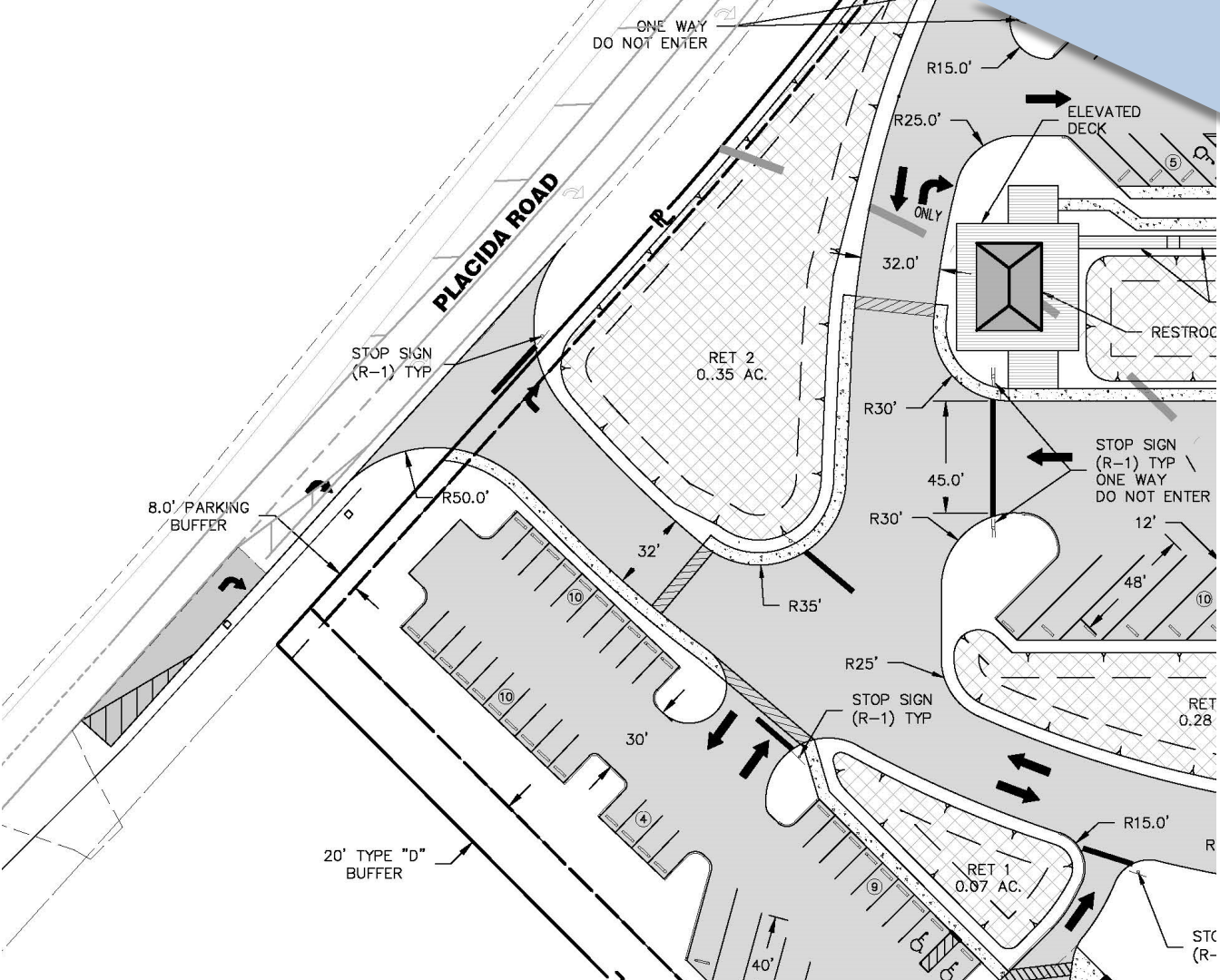
MASTER PLAN

BOCA GRANDE CAUSEWAY



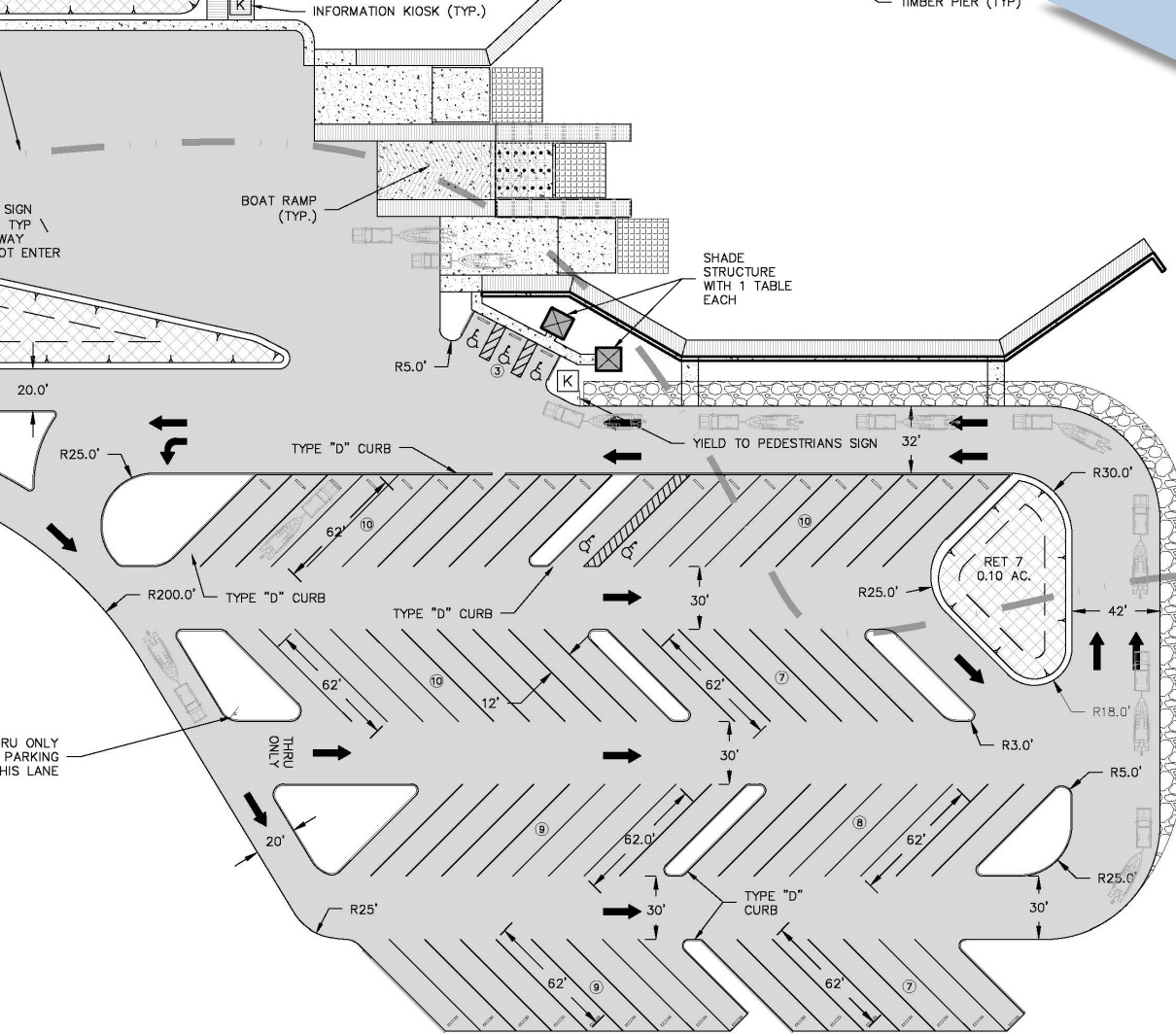
**Ingress / Egress:
Boca Grande
Causeway**

MASTER PLAN



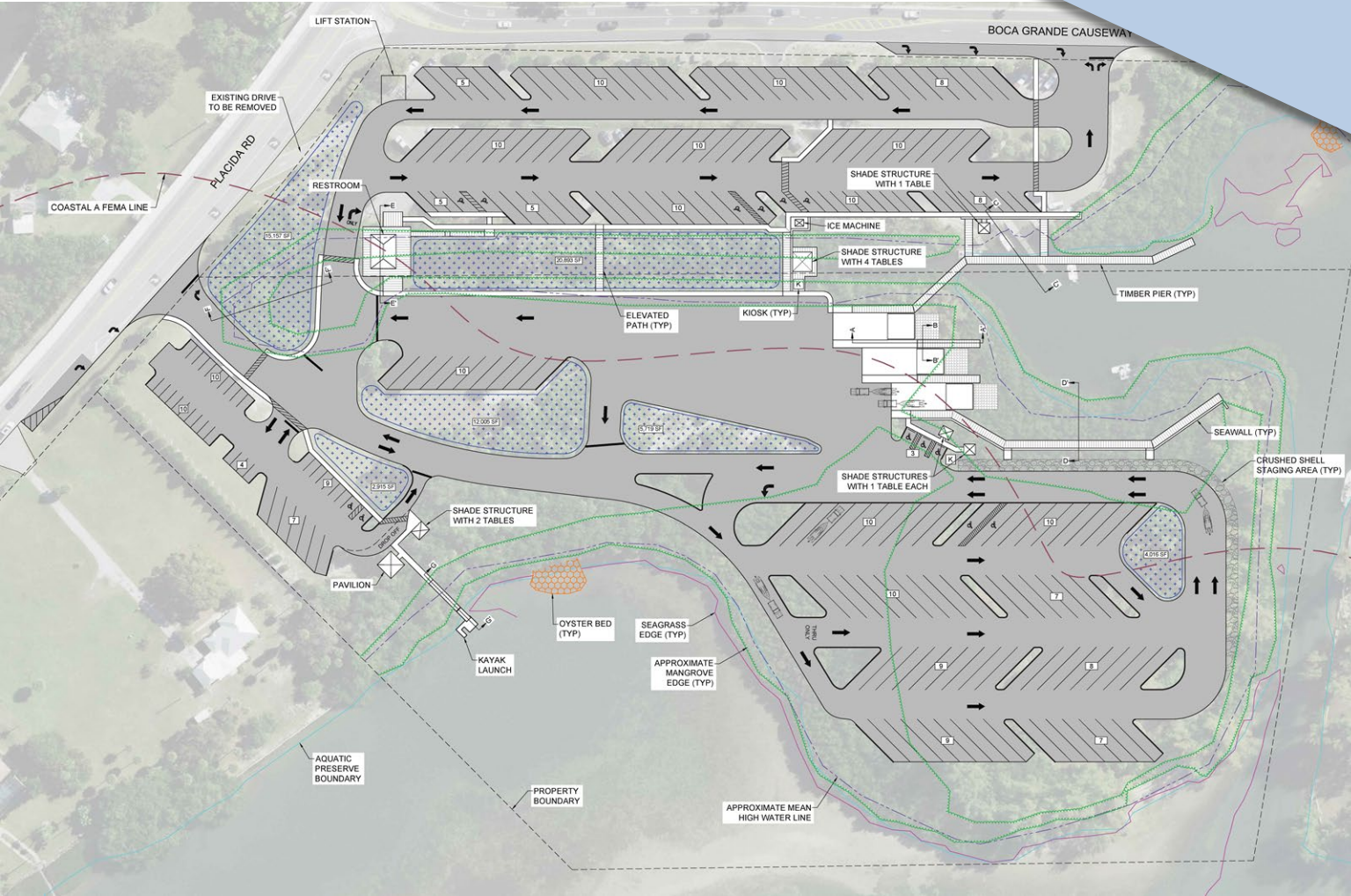
**Ingress / Egress:
Placida Road**

MASTER PLAN



Queueing
&
Dimension
Exhibit

MASTER PLAN



**Schematic
Design Site
Plan
Spring 2022**